

## SOFTWARE, INTERFACES E INTERNET PARA SISTEMAS HR-PRO

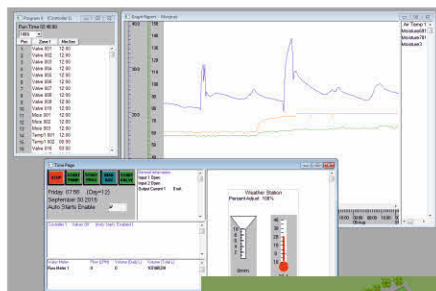
All 2-wire and Multi-wire irrigation controllers can connect to the internet. By using Web App or by running Ground Control software on your PC, you can operate your irrigation from any device that can connect to the internet.

Our irrigation controllers can be connected to the internet by cable or wirelessly.

Internet devices communicate to our controllers through the Sever. The server logs data from your controller and gives you the option to receive emails on volume usage and any alerts.



## GROUND CONTROL - SOFTWARE DE GESTÃO HR - PRO



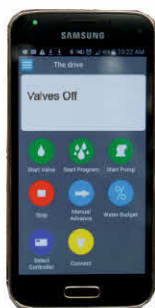
With Ground Control software all the functions on the irrigation controller can be operated from your PC.

- Construct custom irrigation programs.
- View irrigation events and errors reports.
- View sensor readings in reports or graphical format.
- Display dynamic status of sensor readings and inputs.



Ground Control also includes a comprehensive graphical drawing facility. Realistic pictures of your irrigation area can be easily drawn and the irrigation system operated from the graphical image. Simply click on an area in the image to change the irrigation time, start the irrigation or to obtain historical data.

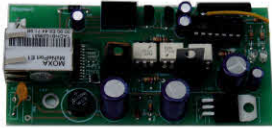
## APLICAÇÃO HR - PRO PARA SMARTPHONE



The Web App gives you full control through a web browser. With the Heron Web App you can:

- See the real time status of your irrigation valves as they run
- Start and stop valves, irrigation program and pumps
- Change automatic starts and programs
- Monitor flow EC and pH
- Change water budget settings.

## INTERFACE HR - PRO PARA REDE



If your irrigation controller is situated close to a local area network then the Heron local LAN interface card can be used to provide an optically isolated ethernet LAN connection. A LAN ethernet cable (RJ45 cable) plugs into the local LAN interface card fitted inside the lid of the controller.

## INTERFACE HR - PRO REDE LOCAL REMOTA



The remote LAN interface and line driver enables controllers up to 500 meters away from a local area network to be connected to the internet. The Remote LAN interface is connected to the internet with an RJ45 Ethernet cable.

- 4 core cable connection up to 500m
- Optical isolation with 20mm air gap for high surge immunity
- 230/110V power required at LAN connection end.

## MODULO HR - PRO COMUNICAÇÃO GSM



If a cable connection is not possible then the Heron GSM mobile module provides internet connection via the GSM phone network.

- Data SIM card required 50-100 M bytes/month
- Good G3 reception required
- Can be fitted internally in the controller or in an external box (shown left).
- External antenna available to mount antenna on a mast

## INTER FACE HR - PRO REDE LOCAL VIA RADIO



If a cable connection is not possible to the Heron Controller then the Heron Radio to LAN Interface provides a private radio link to an ethernet LAN port. The maximum distance of the radio link is 2km to 7 km depending on the power of the radio module. The Radio to LAN interface is connected to the internet with an RJ45 Ethernet cable. As the radios use European license free bands there are no revenue charges with this solution.

The Radio LAN interface is supplied with two external antennas for mast mounting at each end.